

# High-Performance Scoreboards

Redefining the Game.



Trusted by stadiums, sports  
clubs, and communities  
nationwide.

**Pioneer**  
LED

**MADE IN  
BRITAIN**

# Something to know **about us.**

Everything started with **an Idea** and **three individuals.**

**At PioneerLED, we don't just build LED screens, we build bold experiences.**

Founded in the heart of Britain, we are recognized throughout the UK for manufacturing top-quality products that stand the test of time. From concept to creation, every screen we deliver is designed to elevate visibility, simplify setup, and perform flawlessly in the field. Our commitment to in-house manufacturing ensures complete control over quality, innovation, and reliability. No outsourcing, No compromises.

**9+**

**Years of Service**

**3,000+**

**Custom Projects Made**

**17**

**Countries**

**100%**

**In-House Manufactured**

Our goal is to help brands stand out. We focus on building LED solutions that are durable, intuitive, and built for your needs.

Every PioneerLED Screen is designed with setup simplicity and display excellence in mind, making it easier for you to shine at every street or screen.

# Introduction to **Scoreboards**.

Your scoreboard is more than just a timer, it's the heartbeat of your game. It commands attention, engages fans, and drives sponsor value. At PioneerLED, we build scoreboards that are as ambitious as the clubs that use them.

From grassroots to professional stadiums, we provide LED scoreboards that elevate your matchday and keep you in total control visually, technically, and financially.



# How we make your **Problems** disappear?



## **Weatherproof & All-Year Use**

Built to withstand rain, wind, and sun – perfect for year-round performance in any climate.



## **Energy and Cost Efficient**

Save long-term by avoiding the constant need to print or replace sponsor banners.



## **Instant Content Updates**

Upload sponsor logos, event announcements, matchday content, and graphics within seconds.



## **Multi-Purpose Functionality**

For matchday scores, live streaming, sponsor content, and community or outdoor cinema events.



## **Custom-Built to Your Needs**

We manufacture LED scoreboards for any sport, any size, and any installation setup – fully tailored to your club.



## **Visible in Direct Sunlight**

High-brightness LEDs ensure clear visibility at all times, even on the brightest days.



## **Next-Level Resolution & Quality**

High-definition, vibrant LED screens designed and manufactured by PioneerLED – raising the bar for club presentations.



## **Fast Return on Investment**

Enhance the fan experience and increase sponsor visibility. The screen pays for itself by benefiting the club, sponsors, and fans alike.



## **No Content? No Problem.**

We provide scoreboard software and can help design sponsor graphics and content packages tailored to your needs.



CE Certified



Made in Britain



P2.9 Quality



Fully Waterproof



Technology



# Our Product Range.

## Basic P10 Scoreboards

Displays HOME / AWAY team names, scores, and match timers.



96cm X 48cm



128cm X 48cm



160cm X 48cm



96cm X 64cm



128cm X 64cm



160cm X 64cm



CE Certified



Made in Britain



P10 Quality



Fully Waterproof



Technology

# The Software - P10 Scoreboards

We have created our own software to manage our full-colour scoreboards, which many clubs prefer. It is user-friendly; before your LED scoreboard is installed, we will configure all the technical aspects of your software on your controller, having already communicated with you to finalize the layouts.

As illustrated in the images, your controller screen features a 'Dashboard' where you can set up teams, scores, time, and sponsor messages prior to the match. During the game, all these elements can be activated effortlessly by simply clicking a button on the dashboard.

**Taskbar Panel**  
(Customize as many elements as you need)

**Scoreboard Layers**  
(Teams, Scores, Time & Sponsor's Message)

**Scoreboard Preview**

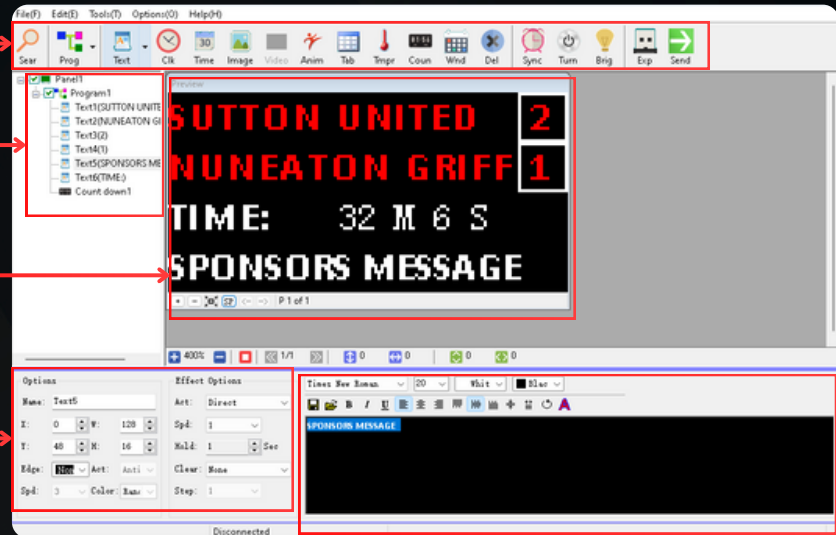
**Adjust the Scoreboard Content**

Adjust the position of the layers  
(So window with team name or score can  
be moved around and resize)

Change animation of the layers  
(scrolling, static, flashing etc.

Adding border around a layer  
(as you can see around the score  
numbers)

**Customize your text**



# Our **Product** Range.

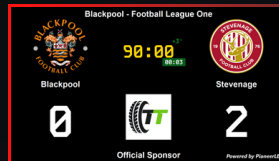
## Advanced High-Resolution P2.9 Scoreboards

Display logos, advanced clocks, video, sponsor ads, and custom content – a powerful all-in-one display tool.



\*Displays both HD Videos & Scores

Custom Sizes Available Upon Request



200×100cm



300×200cm



400×300cm



CE Certified



Made in Britain



P2.9 Quality



Fully Waterproof



Technology

Made in Britain. Built for visibility.  
PioneerLED | The Only UK-based LED Screen manufacturer

# The Software - P2.9 Scoreboards

The screenshot shows the PioneerLED Scoreboards software interface. It features a dark grey background with various input fields and buttons. Red boxes and numbers 1 through 8 highlight specific features: 1. Match title 'Luton Town - Matchday 7 of 46'; 2. Sponsor 'Sponsored by Capital Sky Ltd' with a 'Submit Footer' button; 3. Team 1 selection 'Luton Town' with a 'Choose Logo' button; 4. Team 2 selection 'AFC Wimbledon' with a 'Choose Logo' button; 5. 'Promotional Graphic' section with 'Choose Promotional Graphic' and 'Hide Promotional Graphic' buttons; 6. 'Match Settings' section with a 'Knockout Match (Extra Time if Tied)' checkbox; 7. 'Stoppage Time' section with 'Stoppage Minutes' set to 2 and a 'Submit Stoppage Time' button; 8. 'Custom Start Time' section with 'Minutes' set to 44 and 'Seconds' set to 45, plus a 'Set Time' button. At the bottom are 'Start 2nd Half', 'Pause', and 'Reset' buttons.



1. Team Names, Team Logos & the Scores
2. Name of the match / tournament
3. Sponsor's Name & Logo
4. Any promotional videos or Ads
5. Select the type of the match
6. Extra Time
7. Match Time
8. Custom Time Settings

## What **we** use



### SMD RGB Diode

- ✓ High brightness with superior colour accuracy
- ✓ Wide viewing angle (up to 160°)
- ✓ More energy-efficient, consumes less power
- ✓ Allows tighter pixel pitch for HD resolution
- ✓ Sleek, modern, flat surface - looks premium
- ✓ Lightweight and compact modules

# Vs

## What **they** use



### DIP Diode (Old Technology)

- ✗ High brightness but poor colour blending
- ✗ Narrow viewing angle (up to 100°)
- ✗ Consumes more energy
- ✗ Limited to larger pixel pitch (less clarity)
- ✗ Bulky, outdated, dotted surface look
- ✗ Heavier, bulkier cabinet design

The Surface-Mounted Device technology in our SMD displays combines multiple red, green, and blue diodes onto a miniature chip. A single LED chip combined with SMD technology produces many pixels in a single unit which allows screens to show sharper and more fluent images than earlier display methods.



# More Reasons to Choose PioneerLED

## Recognised for Exceptional customer service & after-sales care

Trusted nationwide for our reliable service and dedicated post-purchase support.



## Endless LED solutions under one roof

We have an unmatched variety of LED products—designed to suit every project, scale, and vision. If you need it, we'll build it.



## Trusted by Sports Clubs Nationwide

We've worked with clubs across the UK, and many return for future upgrades and installations.



## Highly Responsive communication & technical support

Get fast, expert help—whenever and wherever you need it. We are just one call away.



## High-Quality Made-in-Britain Products

All our products are designed and manufactured in the UK, ensuring superior craftsmanship, compliance with British standards, and faster delivery.



# Our **Service & Support** to you.



# Other Products.

## Mobile LED Scoreboards



### Mounted on Certified Mobile Trailers

High-definition LED scoreboards installed on movable trailer platforms – ideal for flexible club use.

### Use in Multiple Locations

Move your screen from stadiums to events or between sports fields as needed.

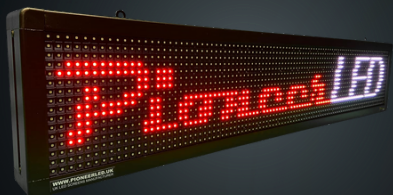
### WMI-Certified Manufacturer

PioneerLED is the only UK mobile LED trailer manufacturer approved under the **World Manufacturer Identifier (WMI)**.



# Other Products.

## LED Scrolling Signs



### Fully Customisable Sizes

Made-to-measure to fit your club's layout, indoor or outdoor.

### Real-Time Information

Perfect for updates, announcements, sponsor messages, and wayfinding.

### Simple to Program

Easily update messages via included software - no technical knowledge needed.

### Reliable Communication Tool

Keep fans, staff, and visitors informed at all corners of your facility.



# People Love Us



**Agnes McCluskey**  
11 reviews · 11 photos

★★★★★

They offered great and great was delivered! I wanted to say a massive thank you to PioneerLED. You have created a wonderful LED displays for my charity event which made it absolute stunner! Without you the event wouldn't be the same!

**Naomi Whiteley**  
4 reviews · 3 photos

★★★★★

Fantastic service!

We are a local business in Bedford and cannot fault their service.

10/10 - thank you for your help!

M&DH Insurance Services Ltd

**Mark Jeffries**  
1 review

★★★★★

I recently phoned the shop with a problem with my sign. I was expecting the worse as it wasn't scrolling across all the screen. I explained the problem and they then FaceTimed me and talked me through what the problem could be. Within 5 minutes he had pinpointed the problem and told me to swap ribbon cables over and diagnosed a fault in one of them. He then sent me a link as to where I could get the cables which I then purchased on Amazon. When the cables arrived I fitted them and the sign is now working perfectly. What a great service they offer. 10 out of 10 for customer service and going that extra mile.

When I purchase a new sign I will definitely using them. Many thanks for your time and knowledge in helping me to fix my sign. Much appreciated

**Phillip Brade**  
4 reviews

★★★★★

Matt was absolutely great keep him he's a terrific, Knowledgeable and understanding.



# Contact us for More

Questions? Comments? Concerns?

## Book a Live Demo at Your Site.

Let us bring the screen to you.  
No obligations. Just pure LED  
performance.



**Phone**

[01234 954321](tel:01234 954321)



**WhatsApp**

[+44 7407 101917](tel:+44 7407 101917)



**Email**

[contact@pioneerled.uk](mailto:contact@pioneerled.uk)



**Website**

[www.pioneerled.uk](http://www.pioneerled.uk)

**PioneerLED Manufacturer Limited**  
51 Murdock Rd, Manton Ln, Bedford  
MK41 7PQ, United Kingdom



Follow Us:      